

Transforming 236 First Street



WELCOME

November 3 2021

Community Information Session #1



Land Acknowledgement

We gather (virtually) today from many parts of what's now called Ontario.


We would like to begin by acknowledging the land on which Services and Housing In the Province operates, which is part of the Treaty Lands and Territory of the Mississaugas of the Credit. In particular we acknowledge the territory of the Anishinabek, Huron-Wendat, Haudenosaunee and Ojibway / Chippewa peoples; the land that is home to the Metis; and most recently, the territory of the Mississaugas of the Credit First Nation who are direct descendants of the Mississaugas of the Credit. We further acknowledge that Dufferin County resides within the traditional territory and ancestral lands of the Tionontati and Attawandaron. SHIP operates on lands covered by Treaties 13, 18 and 19. We are grateful to have the opportunity to work on this land, and by doing so, give our respect to its first inhabitants.

Ways to engage this evening

If you have any questions during this evening's Information Session, we will respond to them during the Q&A following the presentation where you can:

 Use the **chat feature** to ask questions

 Raise your **hand** if you would prefer to comment verbally

 In support of community engagement this evening, we ask that you turn your **camera** on when speaking where possible

 **Important Note:** This presentation will be recorded and made available on our website.

Agenda | Speakers

Louise Kindree

Lesley Nagoda

Thomas DiCarlo

Shirley Hannigan

Cindy Larocque

Cory O'Handley

-
- Learn about SHIP – who we are, history, experience
 - 236 First Street Vision
 - Community Engagement
 - Q&A
 - Community Poll
 - Next Session

SHIP

About Us



Who We Are

SHIP has championed the fundamental right of housing for over 30 years.

SHIP is a nonprofit, accredited, housing and health service provider. For over 30 years, we have been delivering services to the Region of Peel, County of Dufferin and West Toronto and are one of the largest supportive housing providers in Ontario. We promote the well-being of vulnerable and at risk populations and we work closely with individuals in our community, enabling them to embrace their full potential. Our approach encourages participation in planning and directing personalized supports to ensure clients receive the best possible care.



MISSION	VISION	VALUES
To increase quality of life through health services and housing supports that promote mental health, physical health, and wellness	Quality Housing Quality Services Quality Lives	Compassion Hope Inclusion Respect Professionalism

What we Represent

Guiding Principles

For SHIP we effectively and efficiently respond to the needs of our clients, tenants, their families, friends and significant others.

For this community, through education and awareness we can help our community to be open, sensitive and supportive of the needs of vulnerable populations and the efforts of this organization.

Together, we will develop supportive partnerships with clients, tenants and families to improve health outcomes.

Overview of Programs and Services

SHIP offers a spectrum of integrated housing and health services.

This includes supportive housing, congregate housing, case management and community wellness, housing support and landlord engagement.



Our Experience and our Strengths

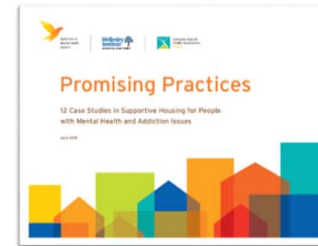
Our People

Always proud to say I work at SHIP

I feel privileged to be an employee of SHIP



Our Service



Our Housing



Collective Impact

SHIPs Collective Impact



5,000+
Individuals served
annually



2,000+
Housing units



1,500+
Individuals assessed
for services annually



15+
Individuals
housed monthly



7
SHIP owned
apartment buildings



100,000+
Episodes of direct client
service annually

About SHIP in Dufferin County

SHIP has been operating in Dufferin County for more than 10 years and has experienced significant growth in providing housing and support services to an ever increasing number of individuals in our community.

Measure	2009	2021
Housing	0	50
Clients we support	0	140
Staff	1	12
Programs	1	8

“...the Crew of SHIP rescued me and nursed me back to health and happiness, with their kindness and patience.”

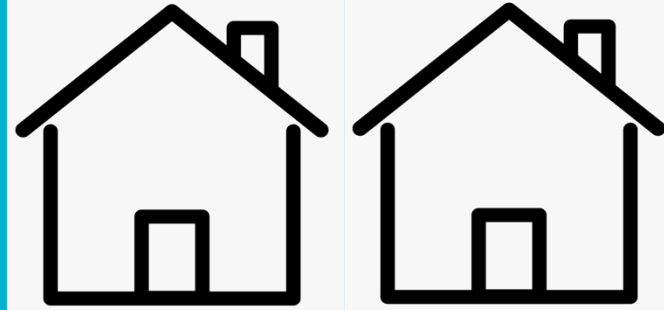
- Sean, Dufferin Client

SHIP

The Vision of the Property



About the Project



SHIP recognizes the need for more affordable housing in Orangeville and is working to expand and revitalize the affordable housing stock by 25 units.

- ✓ Studios and two-bedroom units supporting an identified shortage of affordable housing
- ✓ Quality, permanent units including complete kitchens within each unit
- ✓ Dufferin Services Team main office location for 12 staff
- ✓ Many amenities within walking distance as well as open community and recreation space creating healthy outdoor environments
- ✓ Well designed landscape improving the location's street appeal for residents and the surrounding community

Timelines

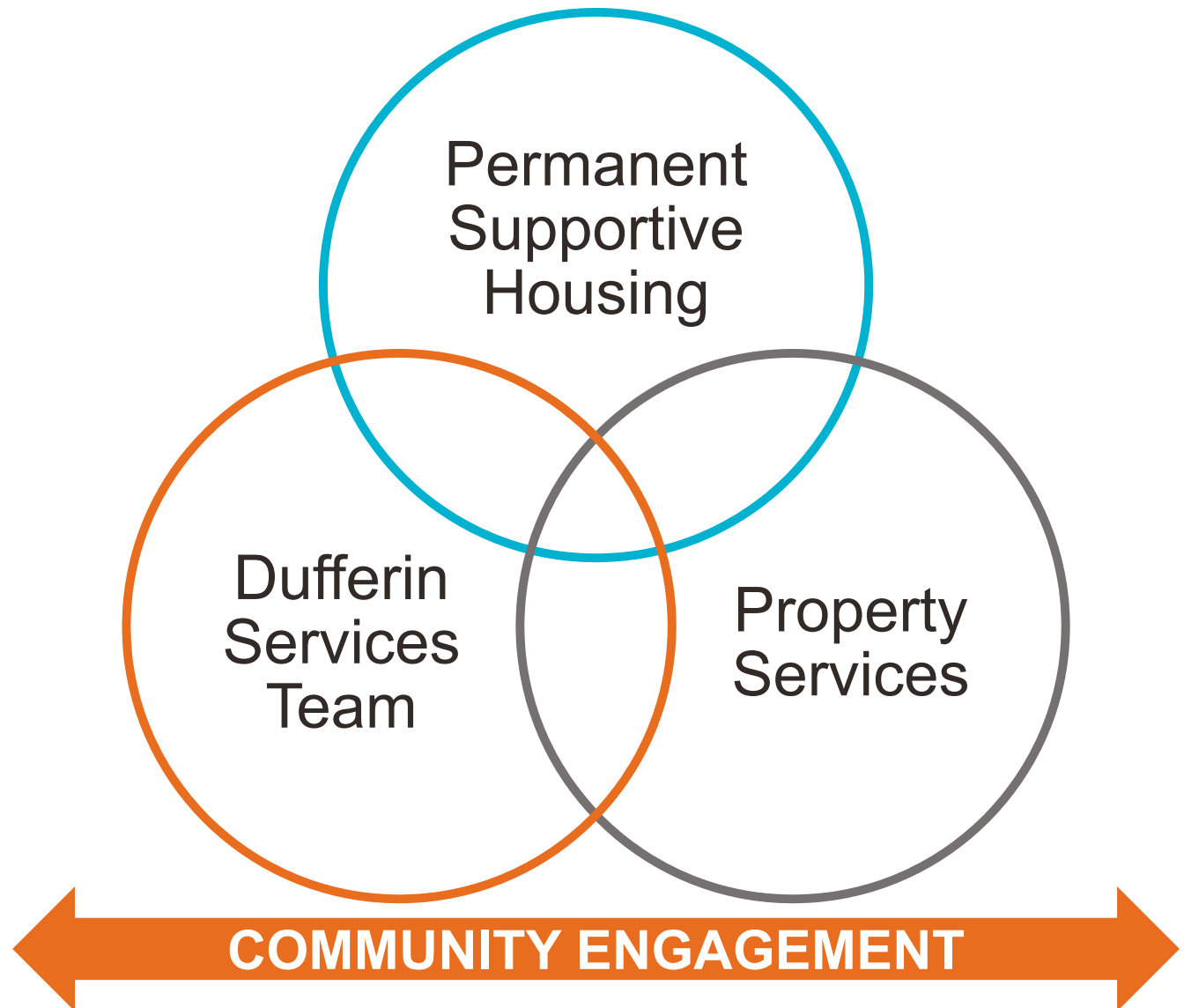
Status	Phase	Date of Completion	Location
Active	In Development	Late 2022	Orangeville

Phase 1	Status
Short Term Program	Projected completion November 2021
Community Engagement	Information Sessions November 3, 10, December 1 Newsletter – September, October
Zoning Approval	Pending

Phase 2	Status
Renovations Begin	Projected completion November 2022
Community Engagement	Information Sessions November 3, 10, December 1 Monthly Newsletters Website – Project Page

Vision

Supportive housing generally refers to a combination of housing assistance and supports that enable people to live as independent as possible in their community.



Our Vision's Guiding Principles



Principle	We Will
Supported Transitions	Provide housing residents currently living at sites slated for redevelopment first at all key stages of the redevelopment process.
Increase Stock	Ensure that there is no reduction in the number of affordable housing units.
Quality and Safety	Through redevelopment, provide safer and better quality affordable housing, reduced maintenance costs and better use of public funds.
Integrate	Where possible, redevelopment will create mixed-income communities with affordable housing integrated into larger communities with other housing options.
Timeliness	Strive to ensure the redevelopment proceeds within a reasonable time frame.
Community	Create homes that fully integrate into surrounding communities
Work in Partnership	Work in partnership with local governments and business, non-profits and the community

Dickinson & Hicks Architects, Grounds Crew; past local supplier relationships include Dufferin Apparel, Lavender Blue, Mochaberry Coffee

The Need for Affordable Housing

HOMELESSNESS

Housing and homelessness has been identified as a community priority with the most pressing housing issue being a lack of affordable housing and availability of rental housing.* “Homelessness” may include couch surfing, precarious housing, living in your car, on the street and in unsafe conditions.

The Dufferin Need for Housing



SHIP – 65+**
individuals seeking
supportive housing



County* – 900+**
individuals seeking
affordable housing

Community Safety and Well-Being Plan (2021-2024), **2021, *2019*

SHIP

Community Engagement



What we have heard

Concern(s)

- Mixed Messages / lack of messaging / Transparency
- Safety
- Who will be living at the site?
- Security
- Not adequate support from SHIP
- Police Presence
- Will this be a shelter? Or a facility?
- Property Management?
- Traffic
- We've not heard enough from SHIP

What we will do

236 First Street Project - Communication Strategies

Objectives	Target audiences	Key Messages	Strategies	Outcomes	How will outcomes be measured?
To create awareness and support of the project	External	To inform the community about our goals, mission, programs, and partnerships.	<ol style="list-style-type: none"> 1. Website page dedicated to updates, timeline, Q&A and who to contact with questions 2. Newsletter (monthly) – will also be posted on website 3. Engagement/ Community Information Sessions 	<ul style="list-style-type: none"> ○ Community will have easy access to information ○ Community will understand the purpose of the project ○ Knowledge sharing will decrease barriers and educate community ○ Increase partnerships 	<ul style="list-style-type: none"> ○ Information sessions - attendance ○ Poll results ○ Observations

Keeping you informed

Learn More About the Project & Stay Connected

236FirstStreet@shipshey.ca
www.shipshey.ca/housing

Attend Upcoming
Community Information Sessions
November 10
December 1
6-7 p.m.



Transforming the Motel at 236 First Street

Hello Community Neighbour,

SHIP has been providing services and housing in Dufferin since 2007 currently supporting more than 150 individuals in the community. We are a person-centered, person-focused organization, actively continuing to expand our capacity to provide health services and high quality housing to the communities we serve.

The recent acquisition of the motel at 236 First Street will support vulnerable individuals in Orangeville and we are confident that through SHIP's management of this property, we will raise the profile of the building to become an important part of the community.

Since May, we have been operating the Short-Term Housing program at 236 First Street providing temporary accommodation to 20 individuals experiencing homelessness or at risk of homelessness in the County of Dufferin. We are currently winding down this program as we prepare for the next phase of the motel's transformation.

Later this year, Phase II will begin. This will see the development of approximately 25 safe, affordable, permanent housing units created, with a primary focus on women. Renovations are scheduled to begin late 2021 with completion in Spring 2022. Additionally, the site will serve as our new office location for the Dufferin Services Team.

Our next step is community engagement as we make every effort to maintain the recognition and respect of the community by hearing what you have to say. SHIP has always engaged with the communities we provide services and housing in, meeting our neighbours, holding town halls and being a positive part of the community, the pandemic has definitely impacted our ability to connect in ways that we typically would.

Our doors are open – we welcome feedback, comments, ideas and suggestions and ask that you and your family complete the Engagement Survey below to tell us how you would best like to hear more about the Motel Transformation.



Turn the page over for assistance with accessing the Survey through the QR Code.

Contact Us:
Cory O'Hanley, 416-697-1842
Cindy Laroque, 519-215-3649
info@shipshey.ca

Learn More about Us:
www.shipshey.ca



Services and Housing In the Province (SHIP)
969 Derry Road East, Unit #107, Mississauga, Ontario L5T 2J7 Canada
T 905 705 5742 F 905 705 1120 E info@shipshey.ca W www.shipshey.ca



Transforming 236 First Street in Our Community

Volume 2, October 2021

About the Project.

SHIP recognizes the need for more affordable housing in Orangeville and is working to expand and revitalize the affordable housing stock. We recently purchased 236 First Street, with a plan to re-develop the property and bring more permanent affordable housing to individuals in Orangeville.

The new development will be comprised of individual homes featuring both studios and two-bedrooms supporting an identified shortage of affordable housing in Orangeville.

SHIP's Dufferin Services Team offices will also be located on site along with office space for community partners.

Status	Phase	Date of Completion	Location
Active	In Development	Late 2022	Orangeville

SHIP IN THE COMMUNITY. Our experience.

Services and Housing in the Province (SHIP) has been one of the largest non-profit supportive housing providers in Ontario for almost thirty years. We have long been a champion of housing and are known as an innovative, responsive leader supporting vulnerable populations living with homelessness, mental health and addictions. Three of our buildings are featured below.



Queen St. E., Brampton Main St. N., Brampton Acorn Pl., Mississauga

4000+ Clients Own & Operate 6 buildings 450 Staff

Learn more at 3 Virtual Community Information Sessions*

November 3
November 10
December 1

All 6:00-7:00 p.m.

RSVP 236FirstStreet@shipshey.ca to receive your virtual invite

*Each session will feature new updates.

Services and Housing In the Province (SHIP)
969 Derry Road East, Unit #107, Mississauga, Ontario L5T 2J7 Canada
T 905 705 5742 F 905 705 1120 E info@shipshey.ca W www.shipshey.ca

Any
Questions?



Community Polls



- A poll is a quick survey to hear from you, our valued community
- Your input helps to provide important feedback and provide SHIP with opportunities to focus on areas important to you
- Polls will happen at each Community Information Session
- Results will be shared in upcoming communications & sessions



How to Participate:

1. A link will be shared in the chat of today's Information Session
2. Submit your choice/response
3. You're done – Thank you.

This Session's Poll

It's time to start our Poll. The poll link will be posted in the chat. Please open your chat, click the link, and complete the questions. **All answers are anonymous**

1. Do you feel you have a better understanding of the Project?
2. Do you feel you have a better understanding of SHIP?
3. Were your concerns addressed today?

SHIP

Next Session



What's Coming at the Next Session on November 10

- November 3 meeting reflection
- Community questions & SHIPs response
- Philosophy and Approach
- Consumer Experience
- Redevelopment Process with SHIP Planners
- Questions on the Project
- Poll questions

Tonight's Takeaways

- The project is Permanent Supportive Housing, not a Shelter
- For individuals who are on SHIPs waitlist and reside in Dufferin
- Supports will be provided by SHIP and the Community with formal agreements in place
- Clear Project messaging from SHIP
- Property Management is in place

25

Permanent
Quality,
Safe
Places to
Live

30

Years of
experience

10

Years of
Investment
in the
Dufferin
Community

Thank you for coming tonight

Supporting the well-being of residents in our communities is the foundation by which SHIP guides the development of housing and services. Our strong community presence, responsiveness, varied housing and service options, commitment to diversity, quality and safety allow us to take a stance and has earned us credibility in the various communities we serve.

